

West Area Planning Committee Presentation

Application reference number:
19/20601/FUL & 19/02602/LBC

Application site address:
Frewin Quad, New Inn Hall Street

www.oxford.gov.uk

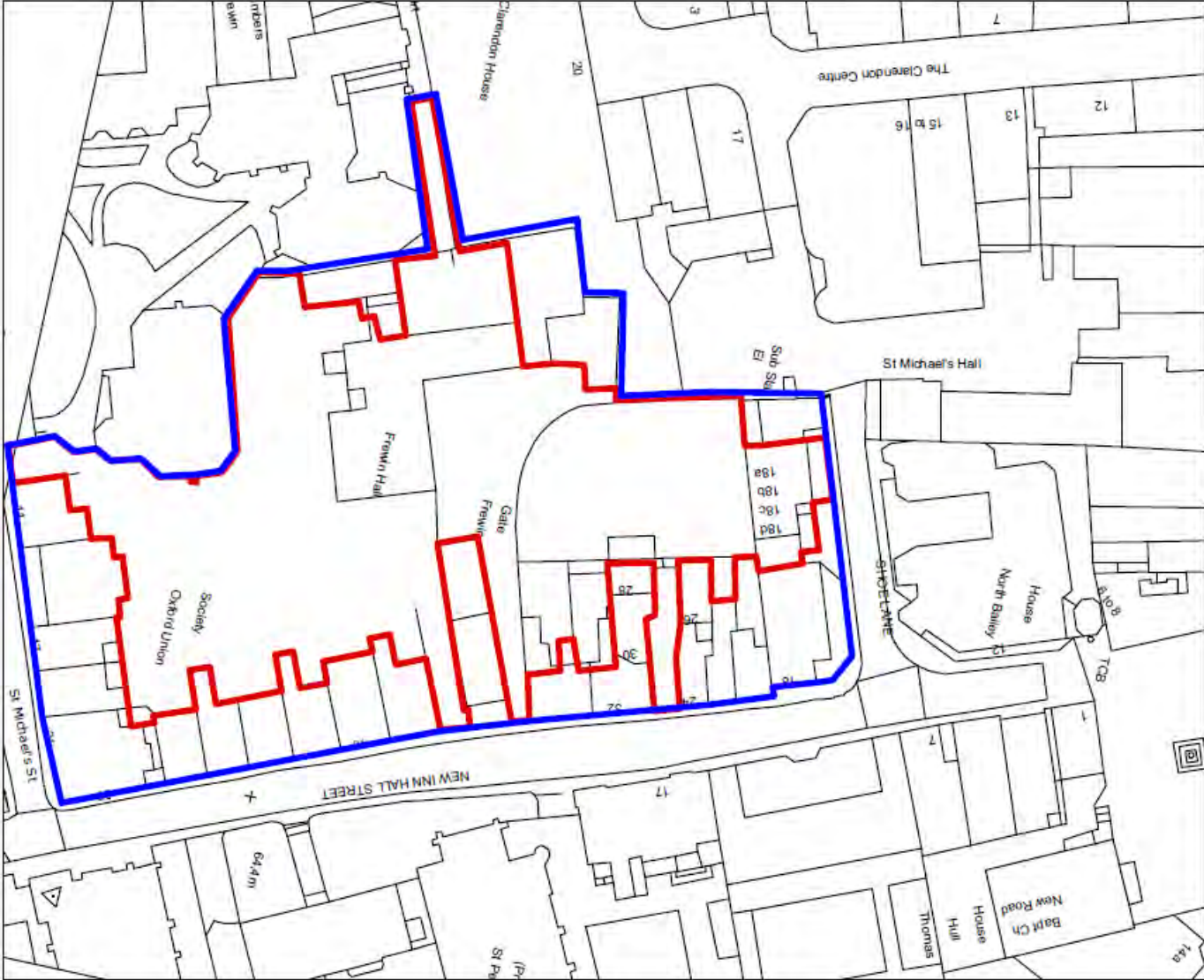


Location Plan

[-gov.uk](https://www.gov.uk)



4



Aerial View Showing Frewin Site

d.gov.uk



OXFORD
CITY
COUNCIL



Existing Site Plan

FREWIN HALL - RED LINE SITE BOUNDARY

Scale 1:500

3,831 sqm site area



9

rd.gov.uk



**OXFORD
CITY
COUNCIL**



Site Photos

gov.uk



OXFORD
CITY
COUNCIL



Site Photos

gov.uk



FORD
TY
UNCIL



8



Site Photos

[-gov.uk](http://www.kfordcity.gov.uk)



**KFORD
CITY
DUNCIL**



6



View from New Inn Hall St



10



View from Shoe Lane

gov.uk



OXFORD
CITY
COUNCIL





Lower Ground Floor Plan (Student Accommodation)



Ground Floor Plan

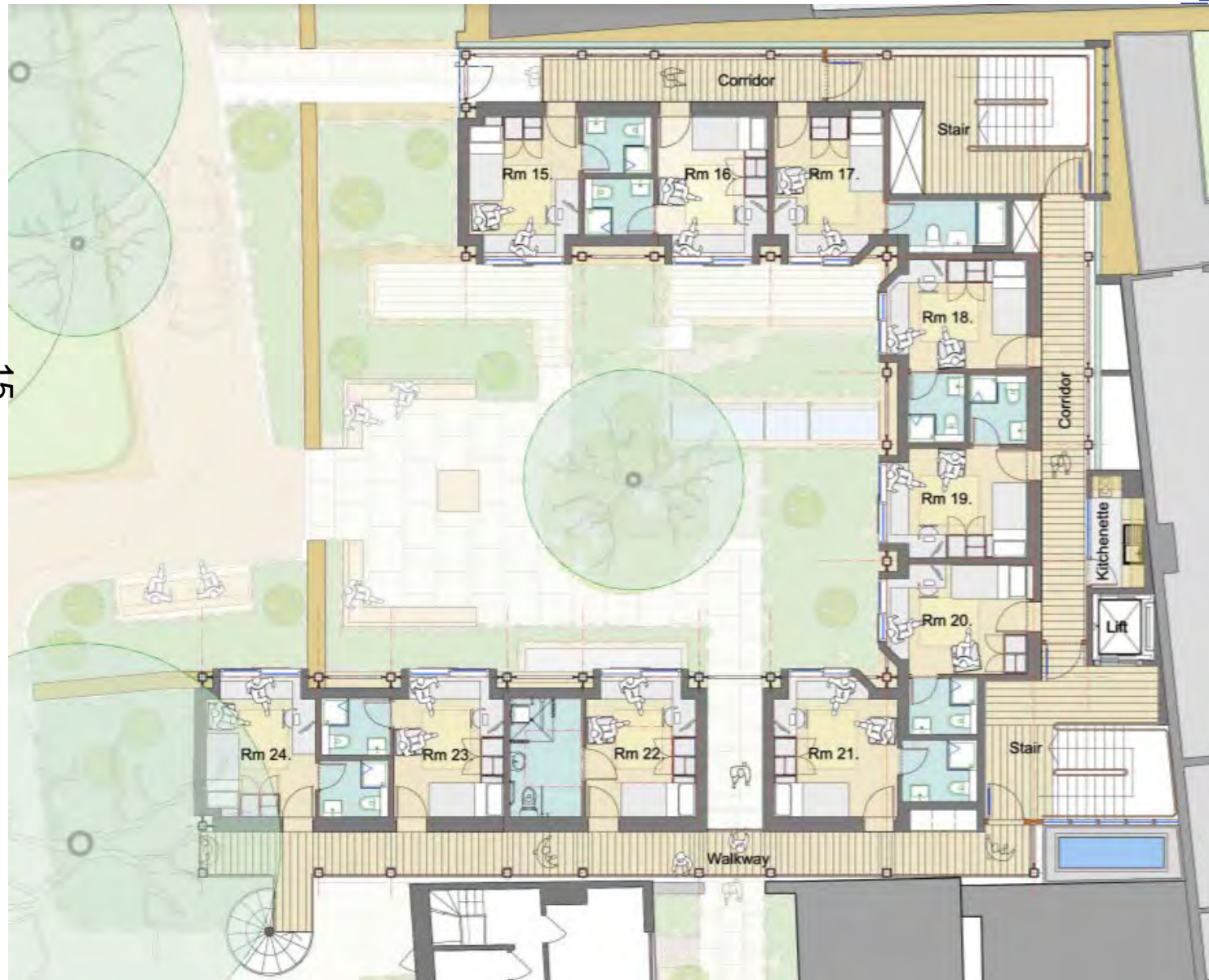


Proposed First Floor Plan

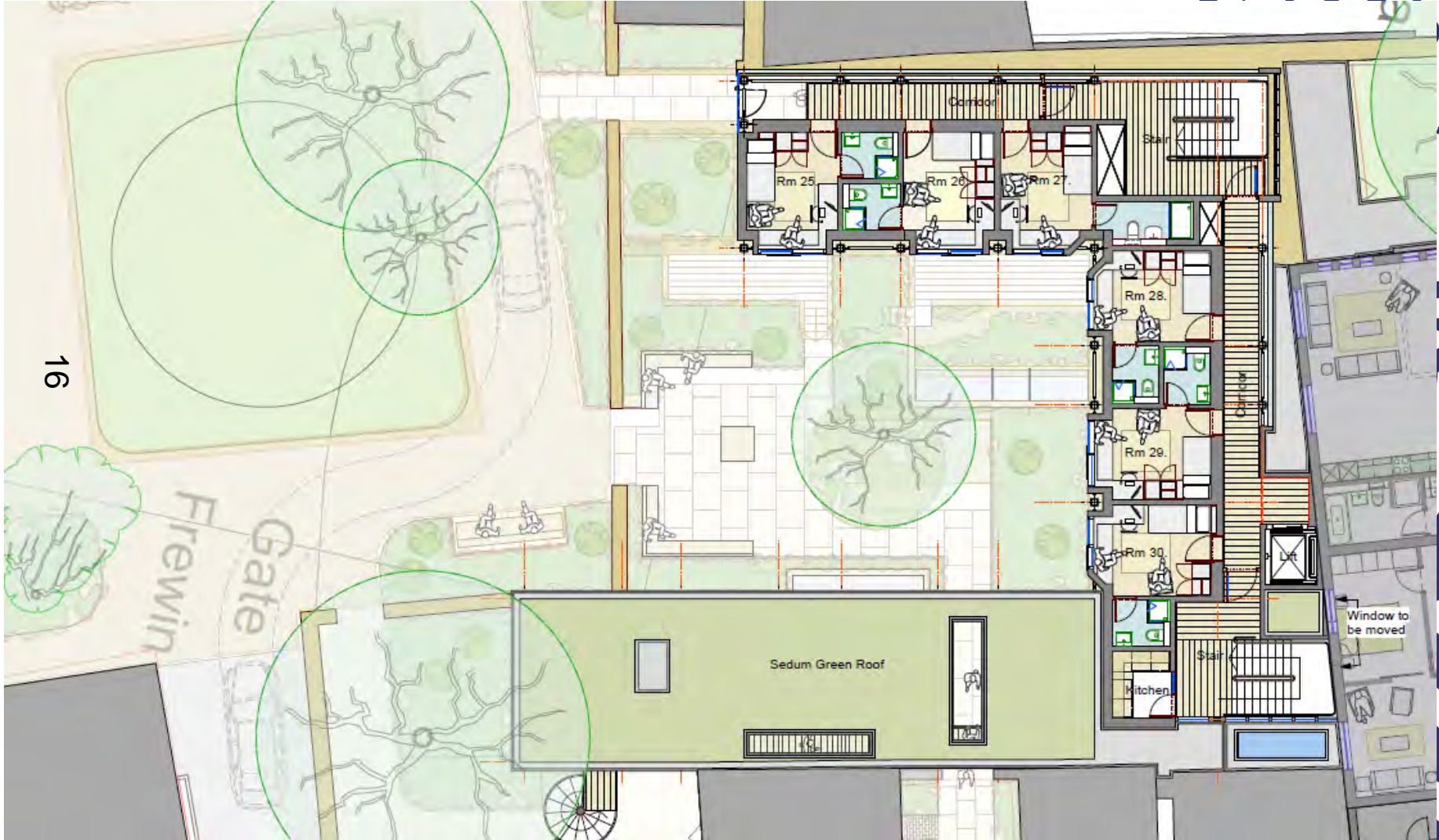
.gov.uk



15



Proposed Second Floor



Phased Landscaping Plan



CITY OF
LINCOLN
COUNCIL



Section view from New Inn Hall Street

v.oxford.gov.uk



L



SECTION 9 - PROPOSED



Site Section of New building from north and Frewin garden

www.oxford.gov.uk



Site section from east and clarendon centre

www.oxford.gov.uk

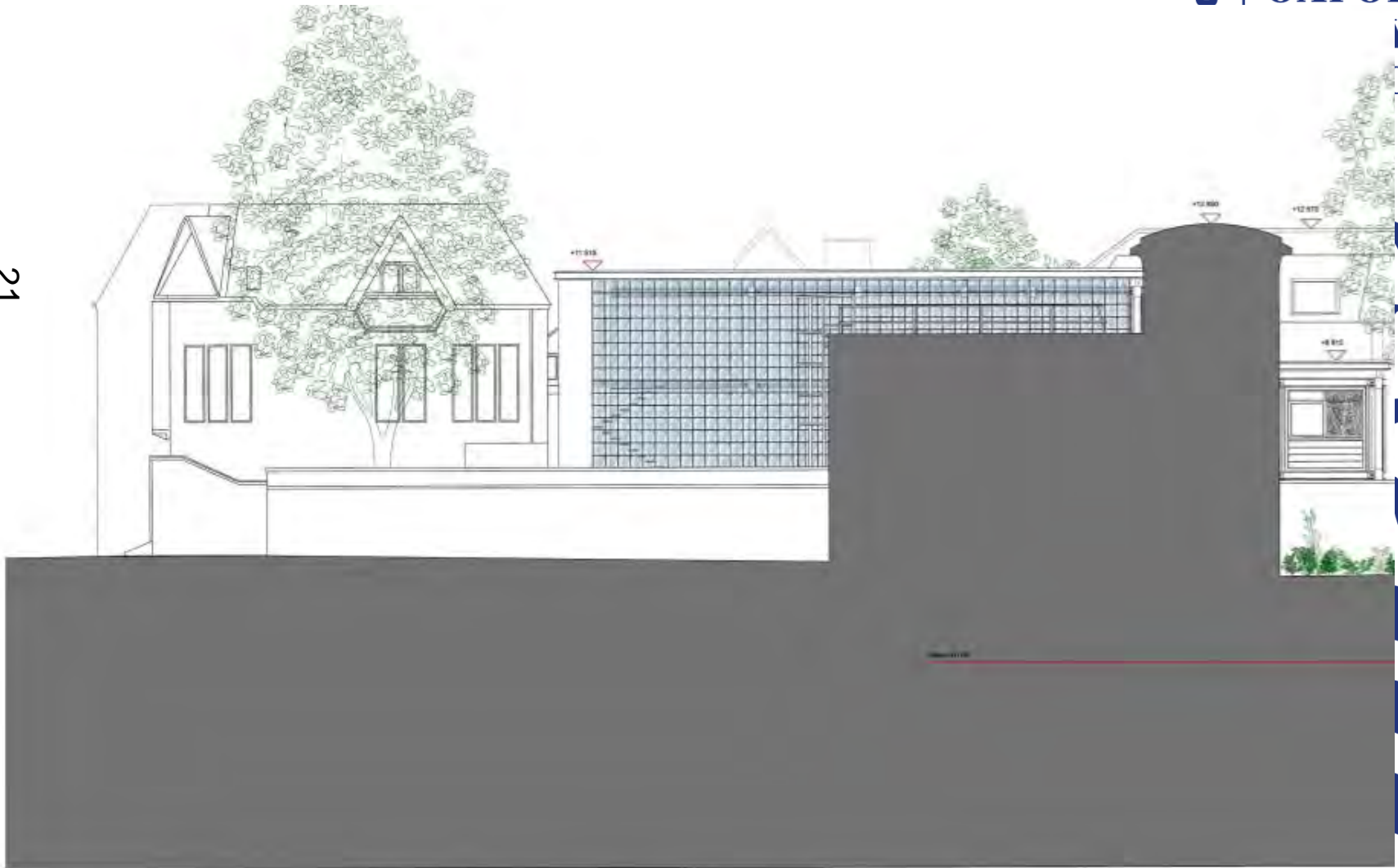


Section facing Shoe Lane and Clarendon Centre

oxford.gov.uk



21



Visuals Entrance – New Inn Hall St



22

Visualisation of the reworked end wall to John Wesley Cottages Court

Existing condition

Entrance from New Inn Hall St

-gov.uk



OXFORD
CITY
COUNCIL



23



View of new accommodation from Frewin Hall

-gov.uk



FORD
CITY
COUNCIL

24



View of Basement and Accommodation Building

ov.uk



OXFORD
CITY
COUNCIL



25

View of new courtyard



d.gov.uk



**OXFORD
CITY
COUNCIL**



Frewin Hall Proposed Ground Floor Plan

27



Frewin Hall First Floor Plan



Frewin Hall Second Floor Plan



29



Frewin Hall Basement Plan



Proposed Elevations Frewin Hall



New Entrance Lobby to North West Elevation

Proposed Elevations – Frewin Hall



Re-instated Entrance doorway to South West Elevation

Garage entrance and rusticated opening adjusted with timber garage doors



Norman vault - Frewin Hall



www.oxford.gov.uk



Ground floor - Frewin Hall



www.oxford.gov.uk



**OXFORD
CITY
COUNCIL**



1970s fire screen - Frewin Hall



www.oxford.gov.uk



**OXFORD
CITY
COUNCIL**



This page is intentionally left blank